



St. Swithum's - Your Church

Growing
Generous
Hearts

*Reaching out to
all people*



How We Began

St. Swithum's has been a part of this community for over 40 years.



We have grown from a congregation of 9 people, who formed the original church, to our present numbers of approximately 130 households.

Growing Generous Hearts

Our Mission

To be recognized as a vehicle for sharing God's love within the Church family and our community.



Growing Generous Hearts

We Value Our People and Their Gifts



Encouraging people of every age to exercise their God given gifts and talents

Participation of each person in lay ministry



Growing Generous Hearts

We Value Our Time Together

Creative and inspirational
worship



Growing in our Christian faith

 Growing Generous Hearts

We Value Supporting Others

Each individual's search in
claiming their faith



Inclusion of people of all ages,
genders, races, sexual orientations
and marital status in the life of the
church.

 Growing Generous Hearts

We Value Community



Caring for each other in community and reaching out to care for others



 Growing Generous Hearts

We Believe Our Present Calling is to Nurture and Grow Committed Christian Disciples

- To explore the context of our ministry and the mission we are called to.
- To equip people to discover their God-given gifts and offer their ministry in and/or beyond the church.
- To encourage everyone in the congregation to deepen their faith through:
 - Daily prayer or meditation
 - Regular worship
 - Increased Biblical literacy
 - Service in and beyond the church
 - The nurturing of spiritual friendships
 - Giving of time, talent and resources

 Growing Generous Hearts

Worship Goals

- To offer training for lay people in all aspects of worship leadership.
- To increase congregational involvement in our Music Program.
- To upgrade our sound system.



 Growing Generous Hearts

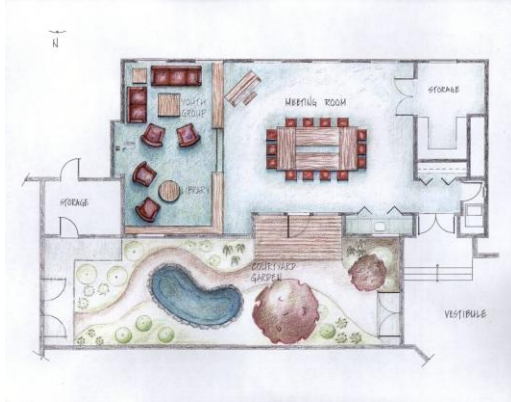
Christian Formation Goals

- To develop a ministry of small groups.
- To implement and monitor a new Sunday School curriculum.
- To create opportunities for individuals to discern their spiritual gifts.



 Growing Generous Hearts

Reaching Out Goals



- To encourage support of the Reliance Mission Project.
- To secure one major partnership with an outside organization.
- To refocus our plans for a Soup Kitchen.

 Growing Generous Hearts

Caring for Each Other Goals



- To sponsor workshops and programs on issues related to pastoral care, such as grief and healing touch.
- To focus on connecting with newcomers.
- To continue to grow in our skill and ability to care for our church family.

 Growing Generous Hearts

How Do We Do All This?

- Lots of time and energy
- Prayer and care
- Money for salaries, facilities, program expenses and outreach
- Volunteer expertise and trained staff

 Growing Generous Hearts

New Initiatives

We are excited about the ministry initiatives we have put in place over the past few years.

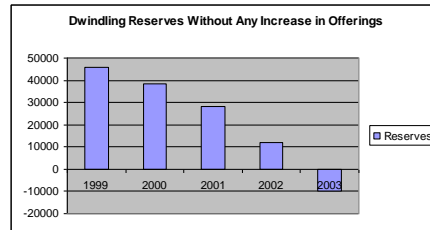
- Youth Worker
- Nursery Worker
- Annual Spiritual Retreat
- New Sunday School Curriculum
- Building Improvements



 Growing Generous Hearts

The Challenge

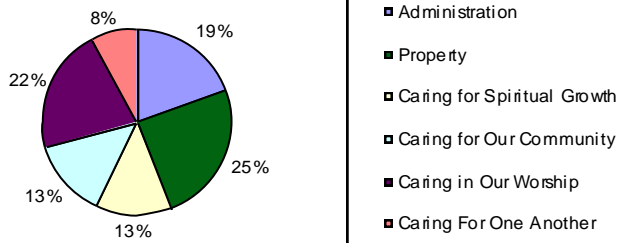
These initiatives and the ongoing cost of maintaining our church building and current ministry programs have increased our expenditures over the past few years. However, offerings have not increased.



Growing Generous Hearts

How Your Offerings Are Used

Distribution of Expenditures



Growing Generous Hearts

Our Stewardship Program Asks You:

1. To consider your spiritual growth as a disciple of Christ.

We believe you are our greatest asset. If we dedicate ourselves to grow in faith and tell our Christian story, together we will increase our ability to reach out to all people.



 Growing Generous Hearts

Our Stewardship Program Asks You:

2. To participate in the vision and mission of St. Swithum's.



How will you be involved?

 Growing Generous Hearts

Our Stewardship Program Asks You:

3. To move with us in our commitment to proportionate giving.

The scriptures teach us that proportionate giving is part of faithful living. Giving is an expression of gratitude for what we have received.



 Growing Generous Hearts

"We are inviting the members of our church to indicate their financial participation in the life of St. Swithum's by considering giving proportionately and by using this as a guide (bring out the brochure and the special form). I have your parish pledge form and your Honouring Our Commitment pledge form (blue) here and I would like you to feel some freedom about completing them privately. I just want to make sure you have all the information so let's just go over what people are being invited to consider and review this page."

"We are asking people to give proportionately in support of the parish and SIA ministries and to make a three-year pledge over and above this to our parish's Honouring Our Commitment campaign."




Guide to Giving

- We are challenging ourselves to move towards giving 5% or more of household income annually.
- Everyone's circumstances are different. Be intentional and prayerful about giving and move toward or beyond the guideline.
- The use of pre-authorized remittance (PAR) makes your monthly offering simpler for you and the Church.

Household Income	Yearly Givings				
	1%	2%	3%	4%	5%
\$10,000.00	\$100	\$200	\$300	\$400	\$500
\$20,000.00	\$200	\$400	\$600	\$800	\$1,000
\$30,000.00	\$300	\$600	\$900	\$1,200	\$1,500
\$40,000.00	\$400	\$800	\$1,200	\$1,600	\$2,000
\$50,000.00	\$500	\$1,000	\$1,500	\$2,000	\$2,500
\$60,000.00	\$600	\$1,200	\$1,800	\$2,400	\$3,000
\$70,000.00	\$700	\$1,400	\$2,100	\$2,800	\$3,500
\$80,000.00	\$800	\$1,600	\$2,400	\$3,200	\$4,000
\$90,000.00	\$900	\$1,800	\$2,700	\$3,600	\$4,500

 Growing Generous Hearts



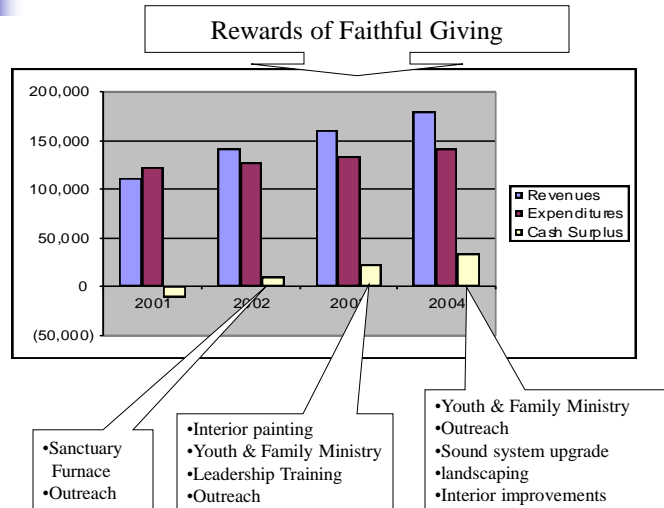
Honouring Our Commitment Gift Chart

Parish Target \$ 35,223
Identifiable Givers 150
Estimated Contributors 93

Gift Chart

	Givers	Amount	Totals
	1	\$3,000	\$3,000
	2	\$2,000	\$4,000
	4	\$1,500	\$6,000
	8	\$1,000	\$8,000
	16	\$600	\$9,600
	60	\$100	\$6,000
Totals			\$36,600
Going beyond...		\$1,377	

Respond with Financial Support



Growing Generous Hearts

With God and each other we are strong. We can continue to make our parish a special place within the community and within the lives of all those that we touch.

Together we will succeed and continue to *Grow Generous Hearts*.



Growing Generous Hearts